

Nepean Blue Mountains Immunisation Report Card 2017

Presented as part of the Immunisation Update education series in October 2017



Health
Nepean Blue Mountains
Local Health District



What we will cover

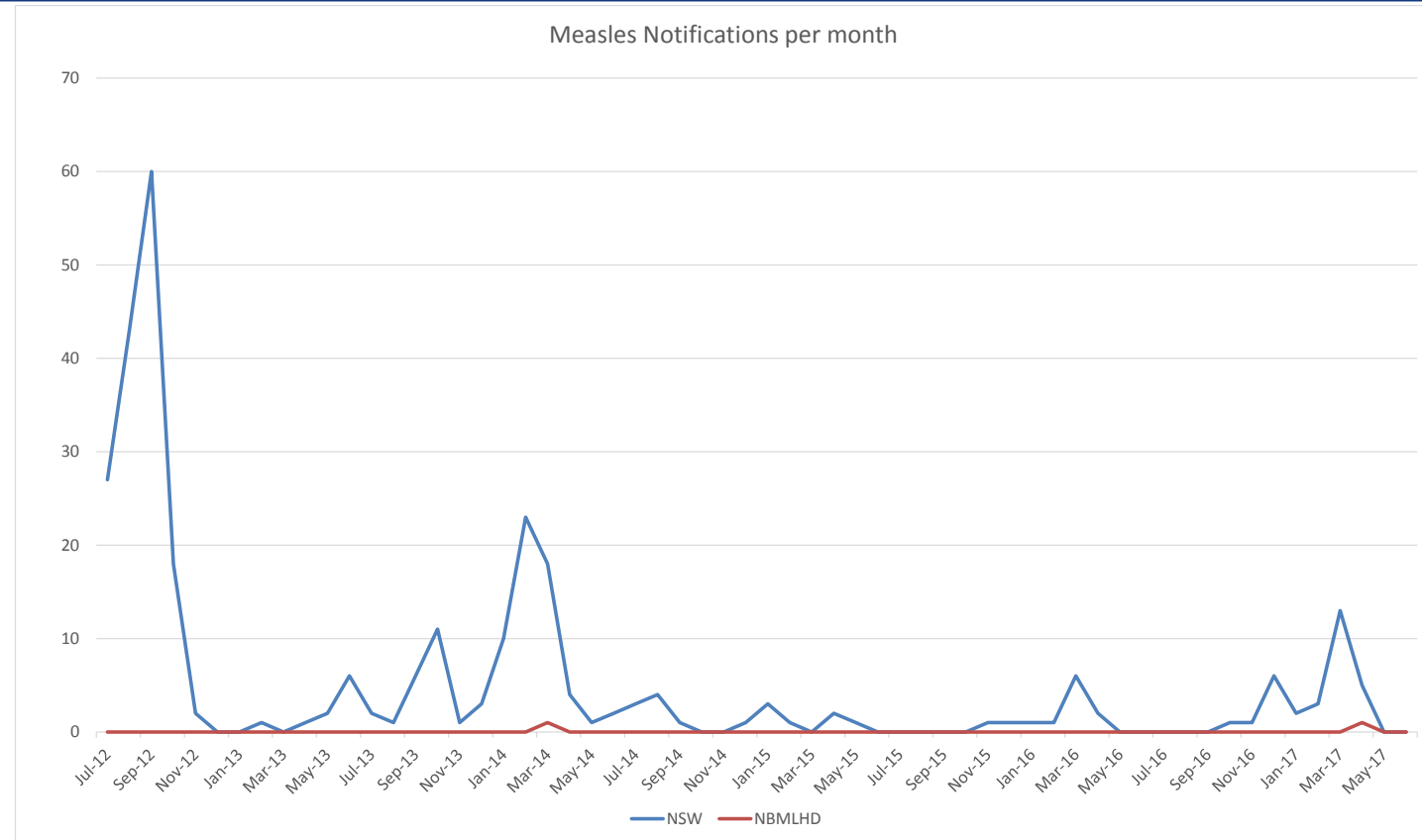
- 2016/17 annual data
 - Vaccine preventable disease notifications
 - Vaccine coverage



VACCINE PREVENTABLE DISEASES IN NBMLHD AND NSW

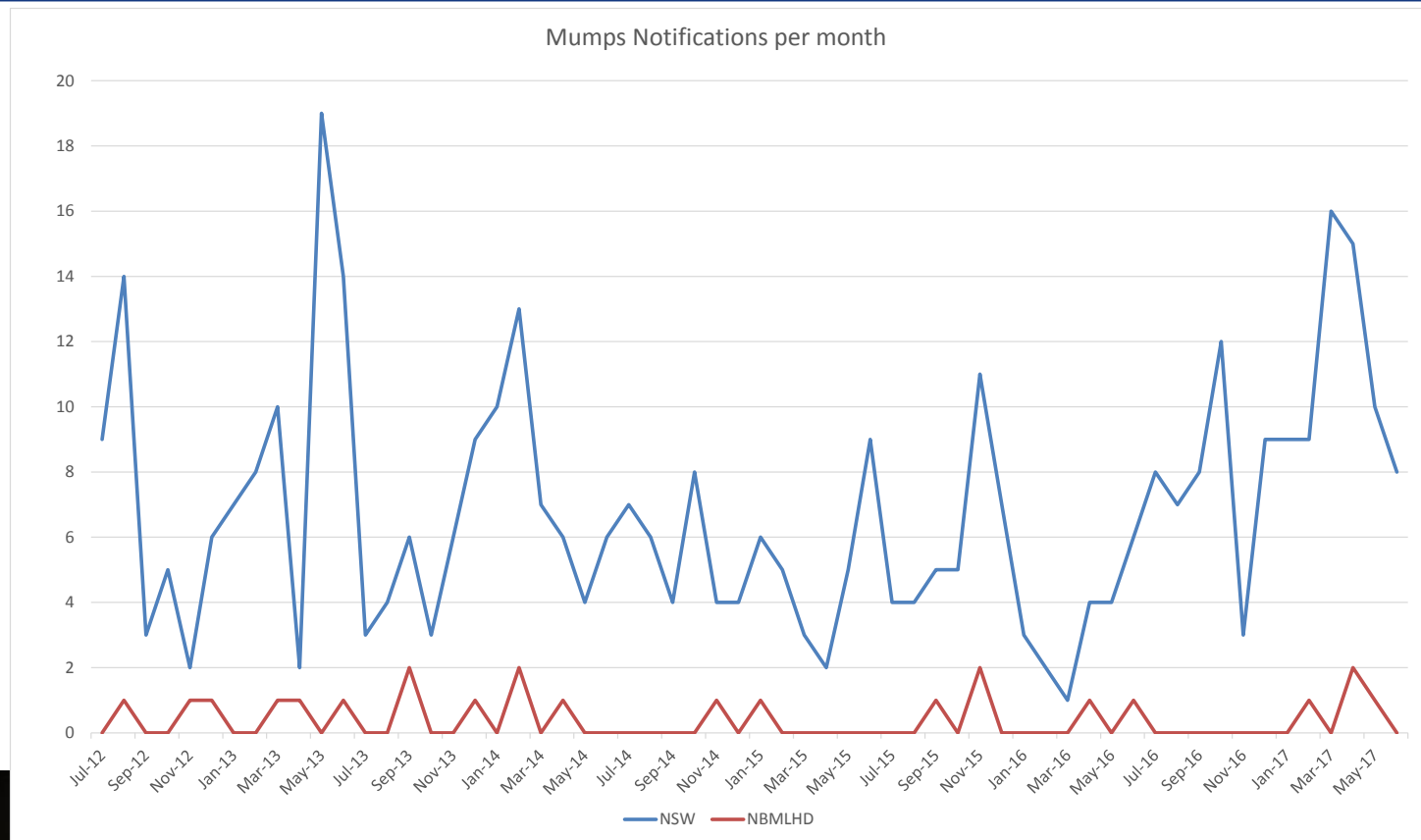
Measles

- 31 cases in NSW in 2016/17; 1 in NBMLHD
- Sporadic cases and occasional outbreaks
- Currently outbreak in south eastern and northern suburbs of Sydney
- Larger outbreak in Melbourne



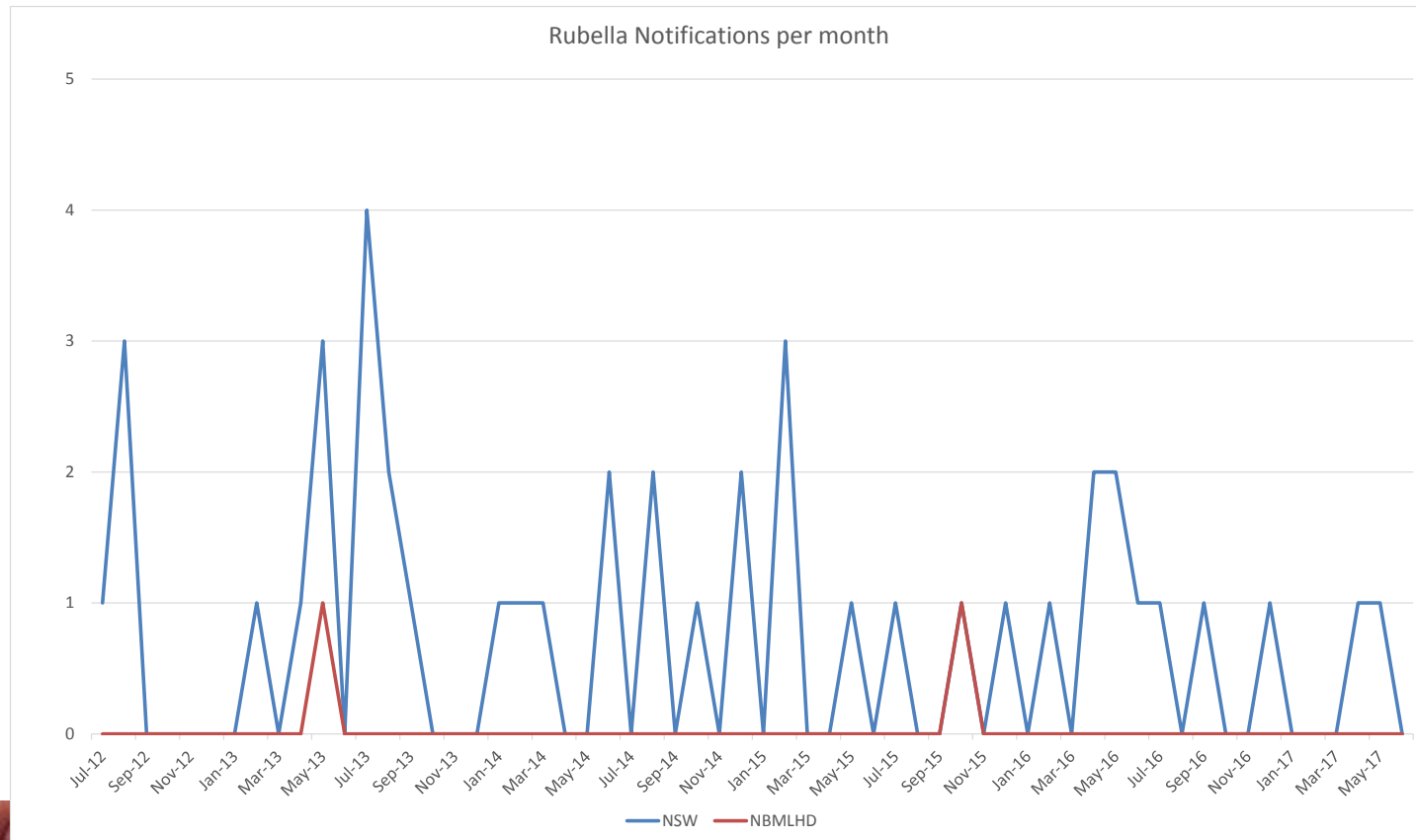
Mumps

- 114 cases in NSW in 2016/17; 4 in NBMLHD



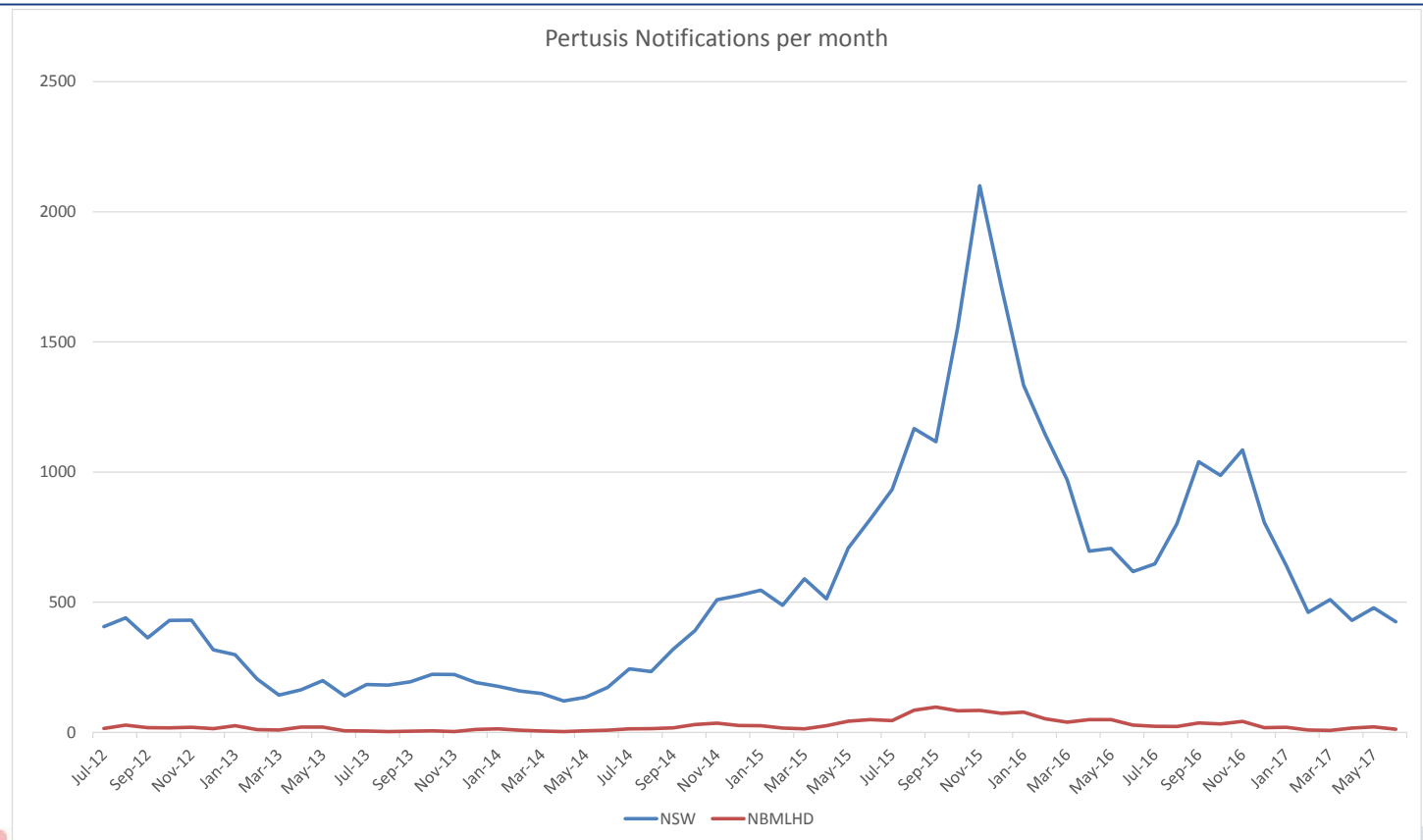
Rubella

- 5 cases in NSW in 2016/17; 0 in NBMLHD



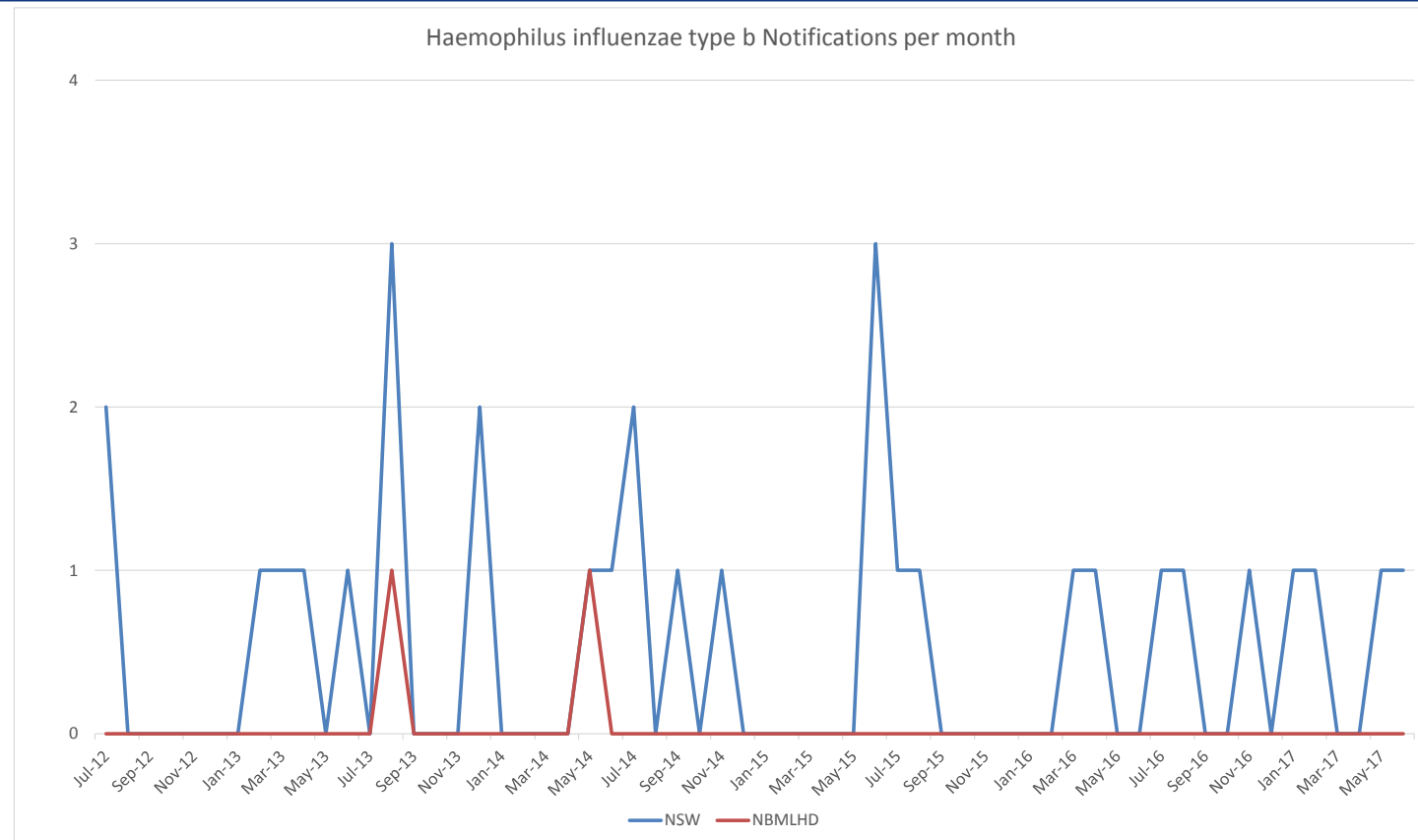
Pertussis

- 8,310 cases in NSW in 2016/17; 257 in NBMLHD
- Community wide outbreaks every 3 to 5 years
- NBMLHD is impacted during outbreaks



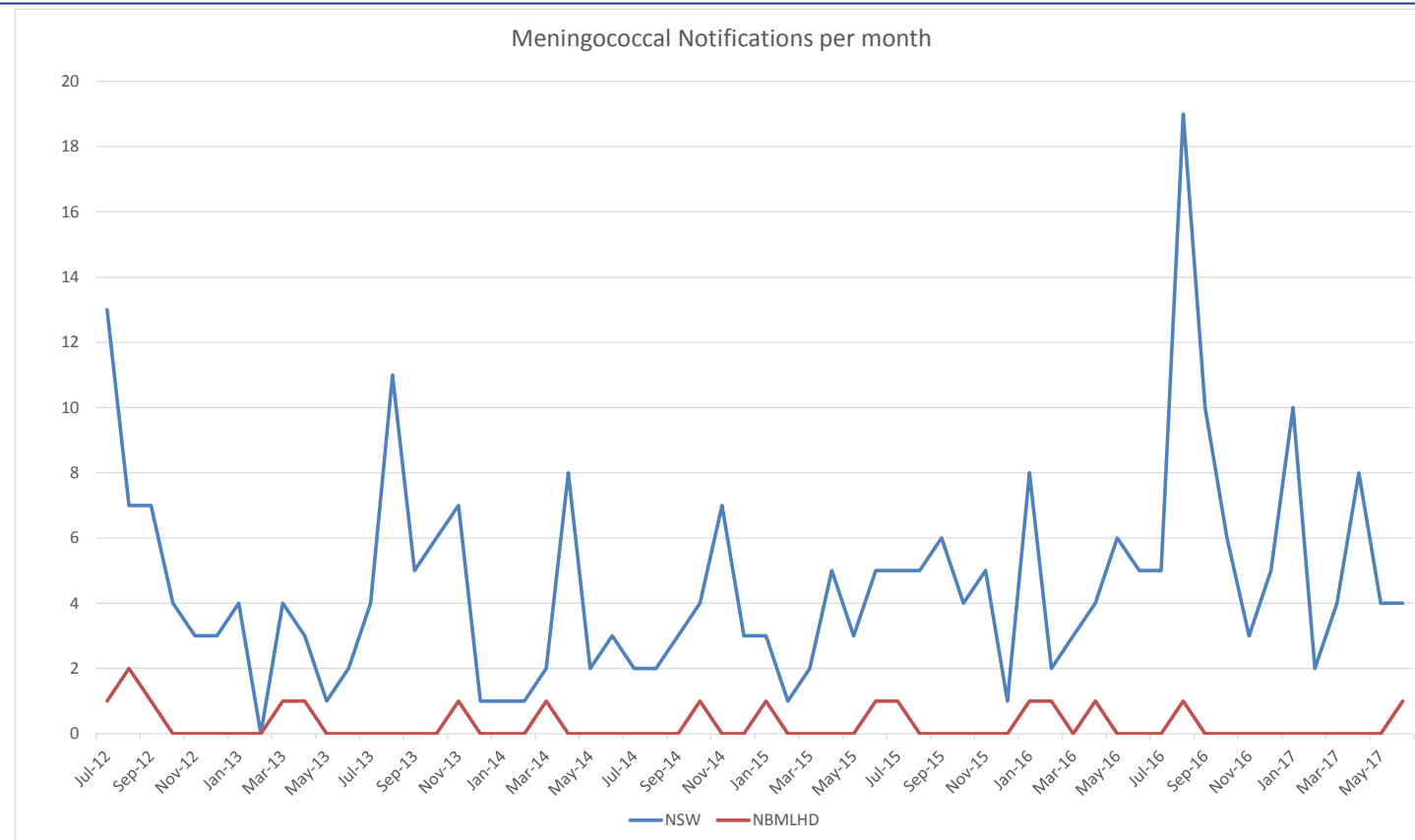
Haemophilus influenzae type b

- 7 cases in NSW in 2016/17; 0 in NBMLHD



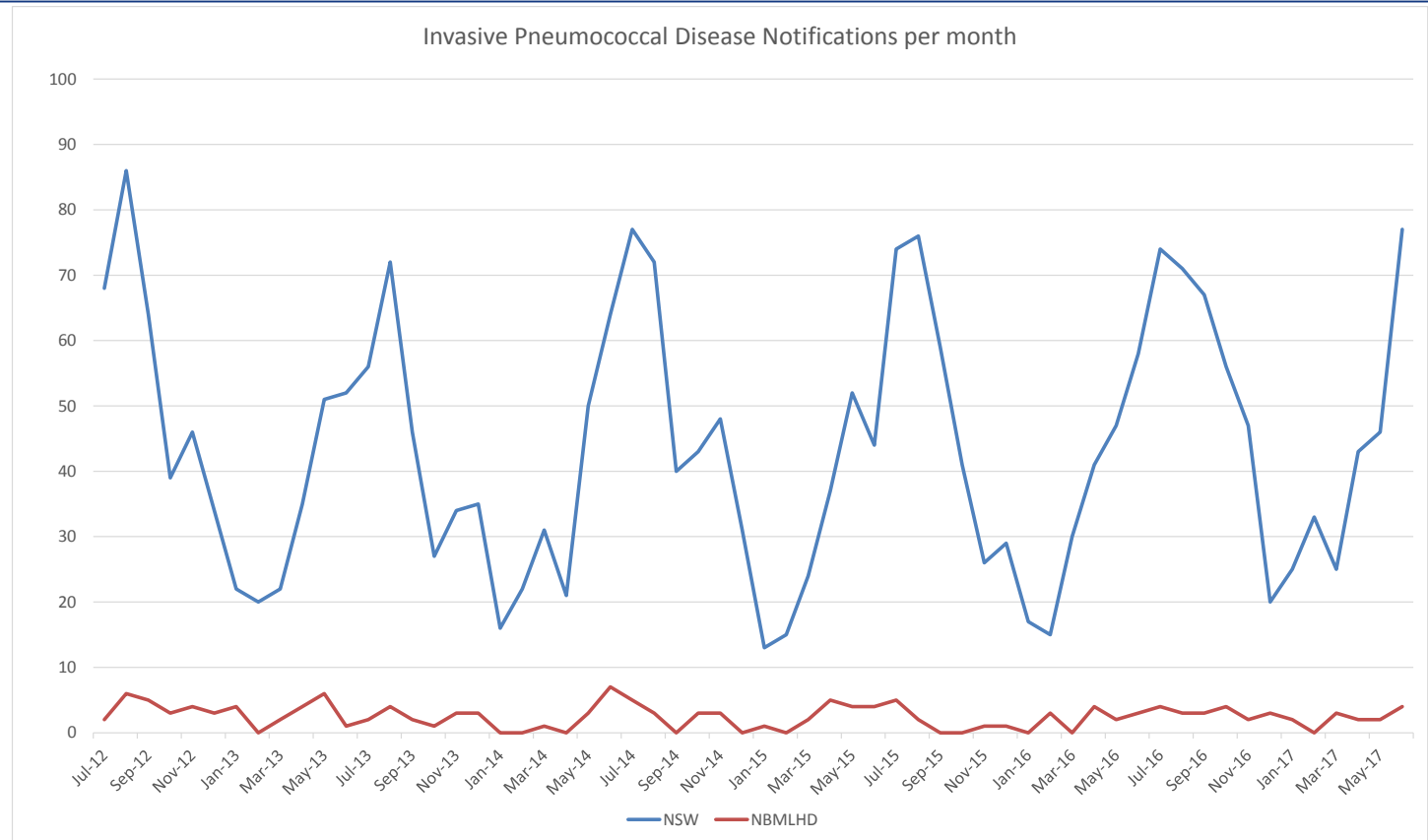
Meningococcal

- 80 cases in NSW in 2016/17; 2 in NBMLHD
- C almost eliminated
- B is now dominant strain
- W is emerging (dominant in north Africa)
- W creating outbreaks in Aboriginal communities



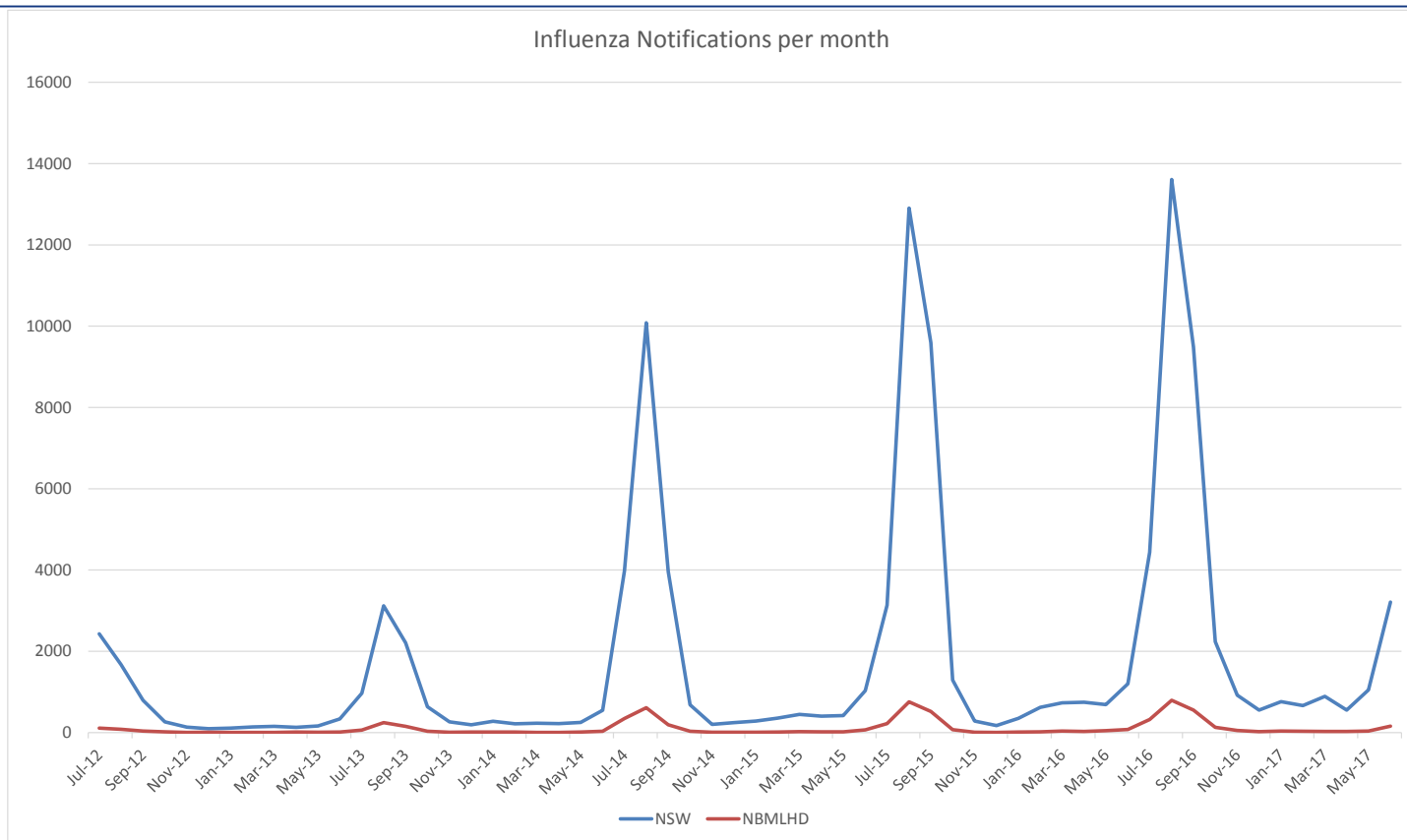
Invasive pneumococcal disease

- 584 cases in NSW in 2016/17; 32 in NBMLHD
- Seasonal with peak in autumn
- Low numbers mean seasonal effects not apparent in NBMLHD

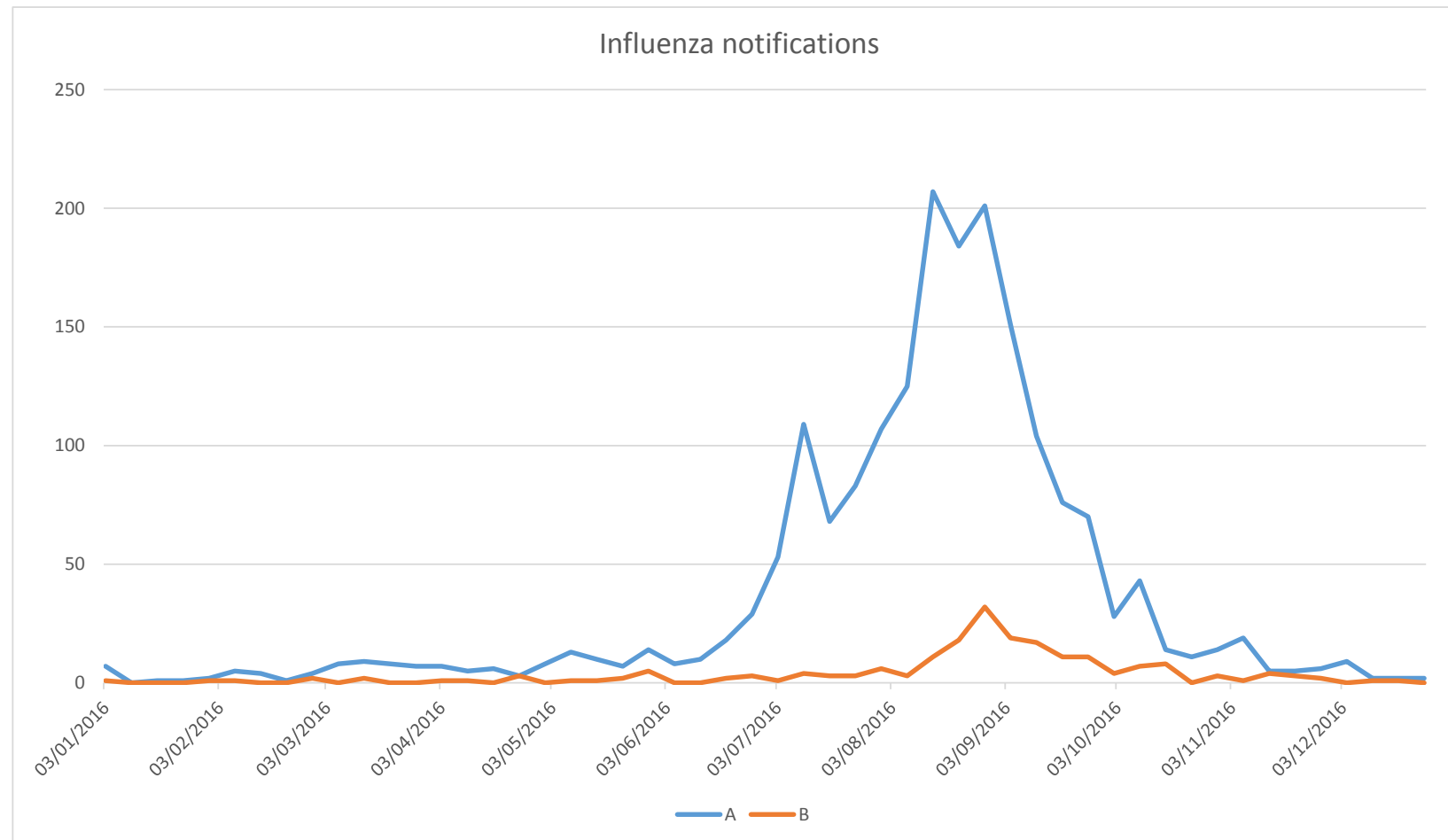


Influenza

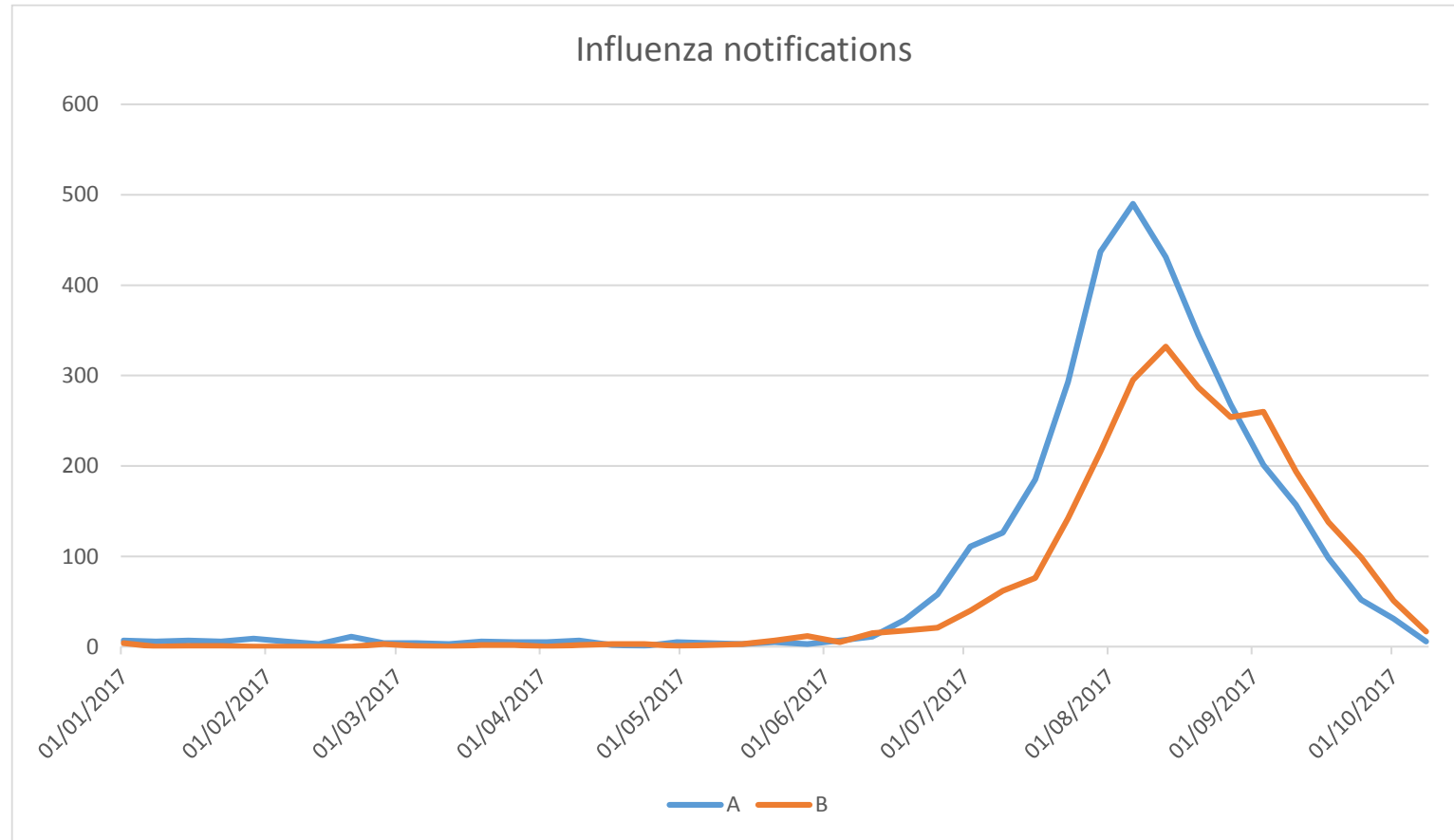
- 38,365 cases in NSW in 2016/17; 2,184 in NBMLHD
- Seasonal with peak in late winter/ early autumn
- Seasonal variability in severity



2016 Influenza Season

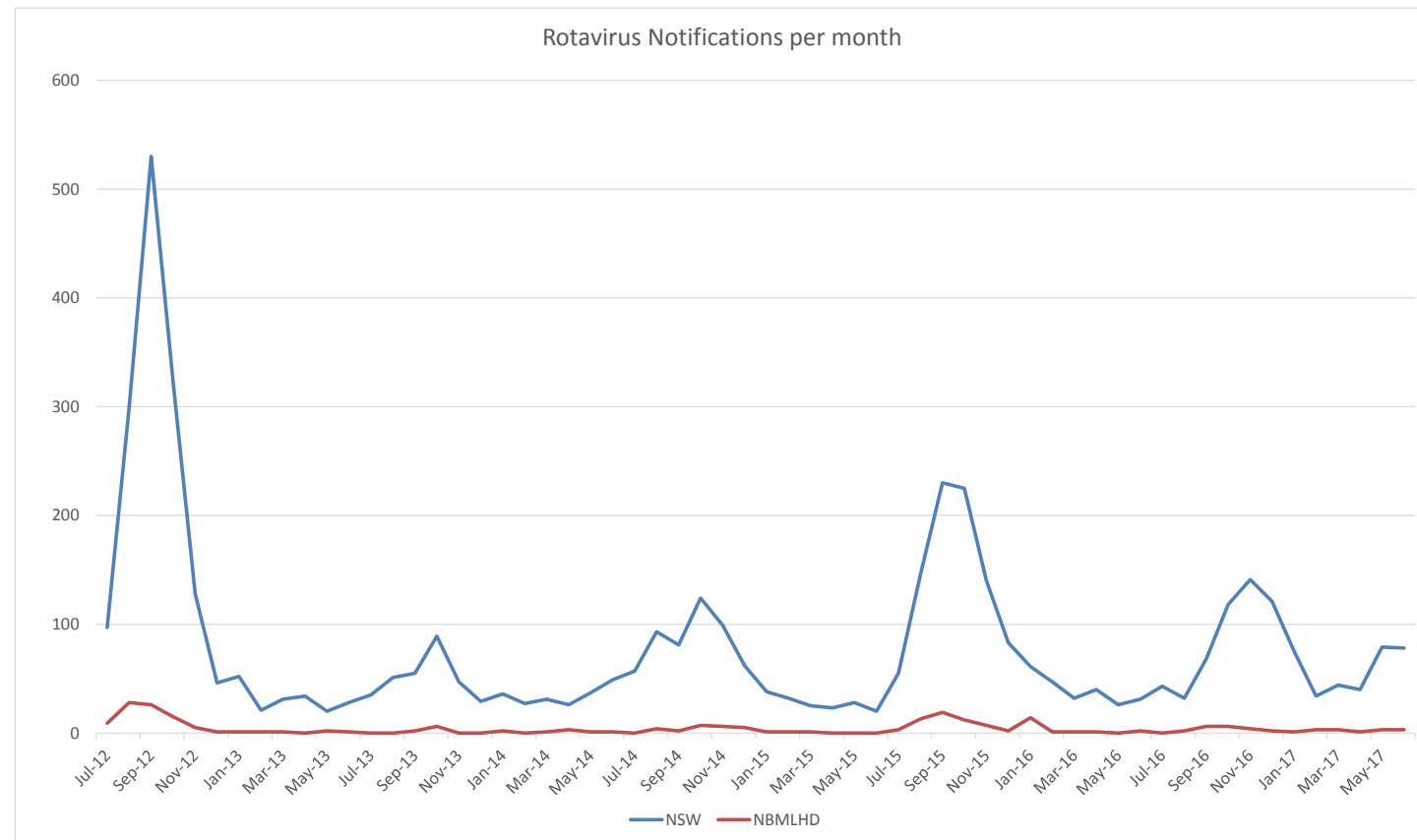


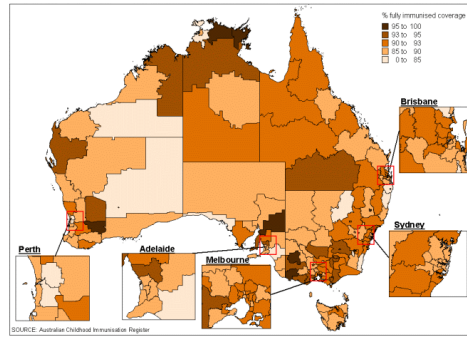
2017 Influenza Season



Rotavirus

- 873 cases in NSW in 2016/17; 34 in NBMLHD
- Seasonal with peak in late autumn/ early summer
- New strain may be emerging as high numbers this winter





VACCINE COVERAGE

ABORIGINAL AND TORRES STRAIT ISLANDER PEOPLE

TOGETHER
ACHIEVING
BETTER HEALTH

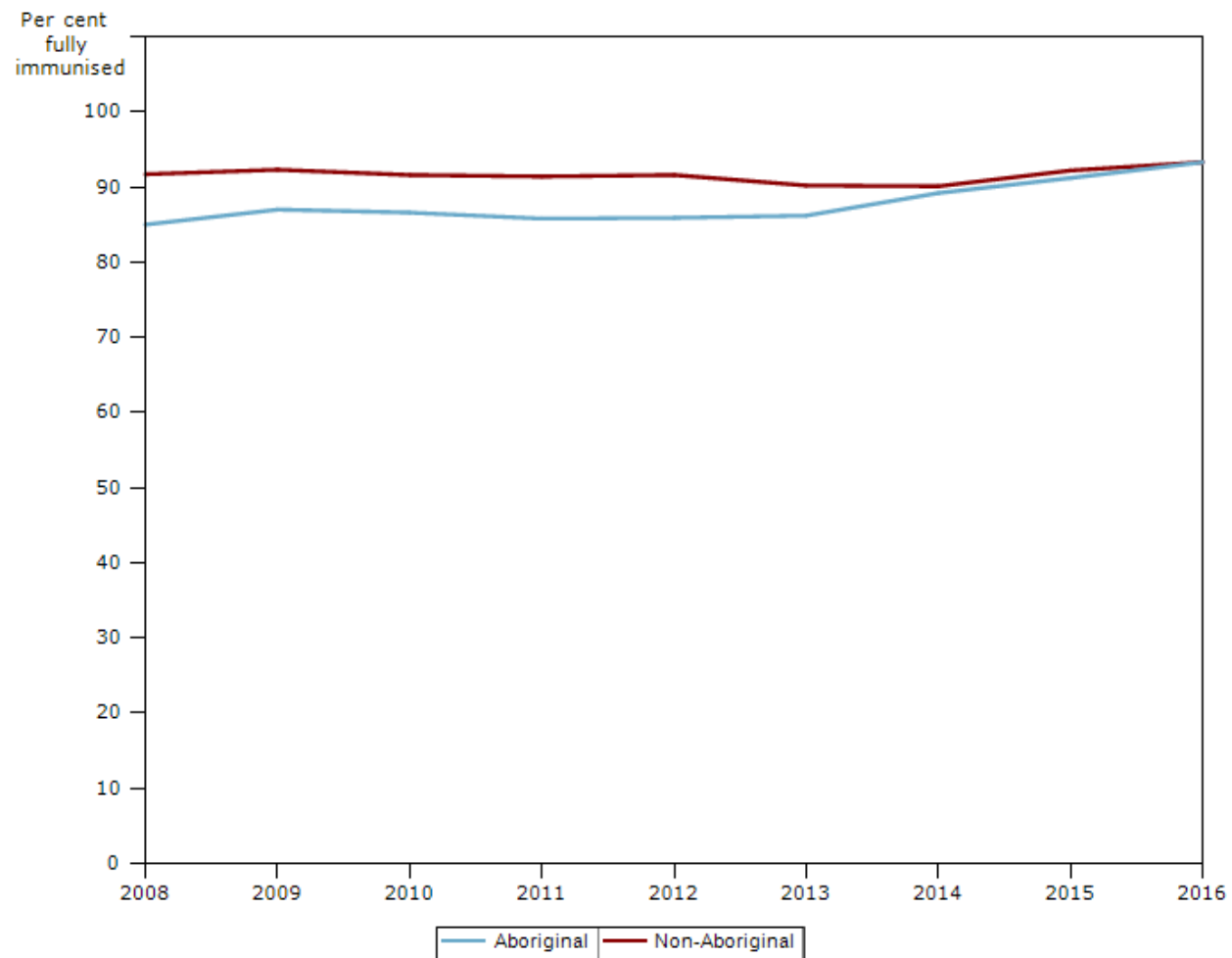


Health
Nepean Blue Mountains
Local Health District

Vaccines for Aboriginal And Torres Strait Islander People

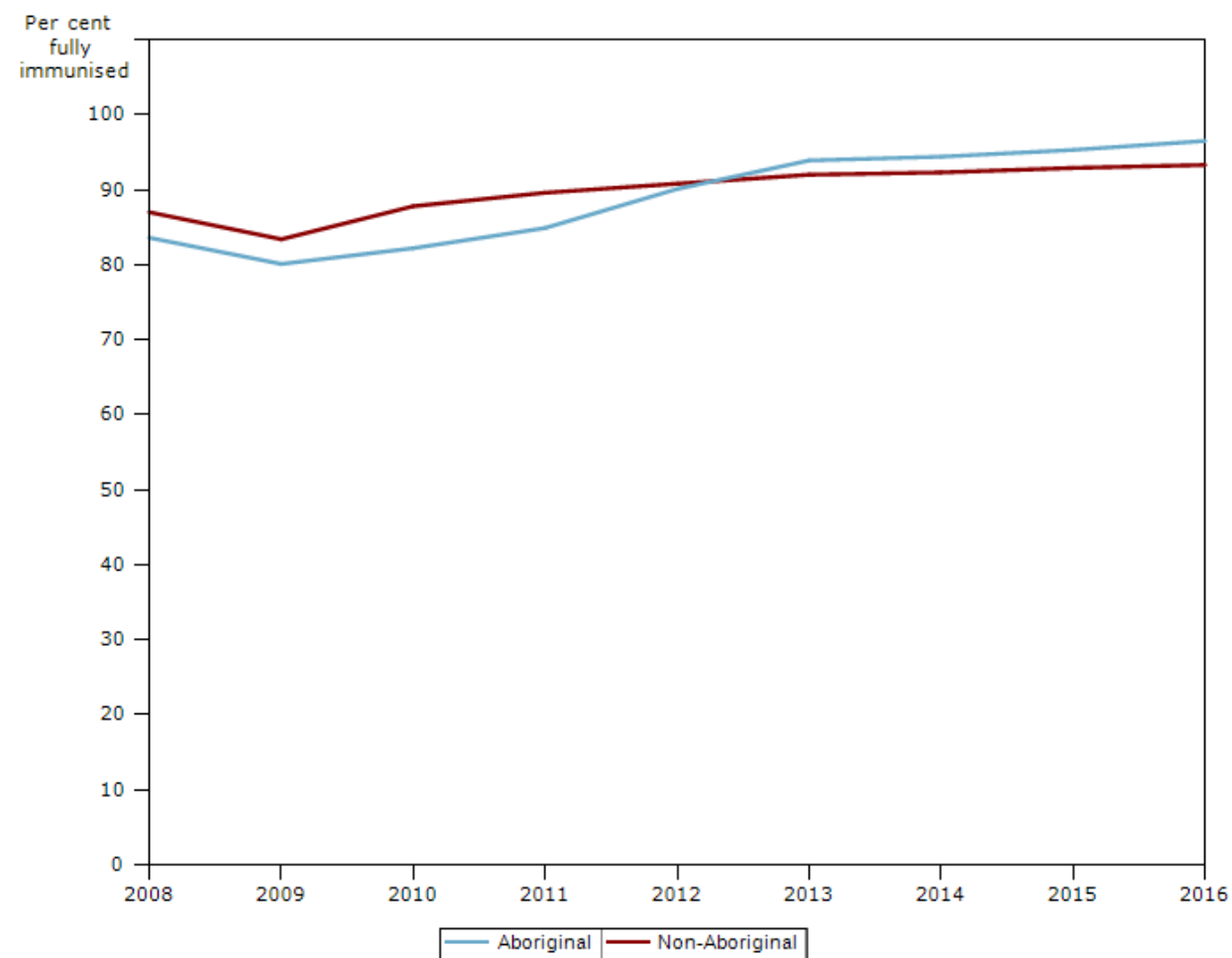
| Age | Vaccines |
|---------------------|---|
| 0-5 years | Routine vaccination as per NIP |
| 6 months to 5 years | Annual influenza vaccine |
| 12 years | Diphtheria, tetanus, pertussis Human papilloma virus |
| 17-18 years | Meningococcal ACWY |
| >15 years | Influenza vaccine 15-49 years old with high risk of invasive pneumococcal disease All aged >50 years – pneumococcal vaccine |

Full immunisation by Aboriginality, children aged 1 year, NSW 2008 to 2016



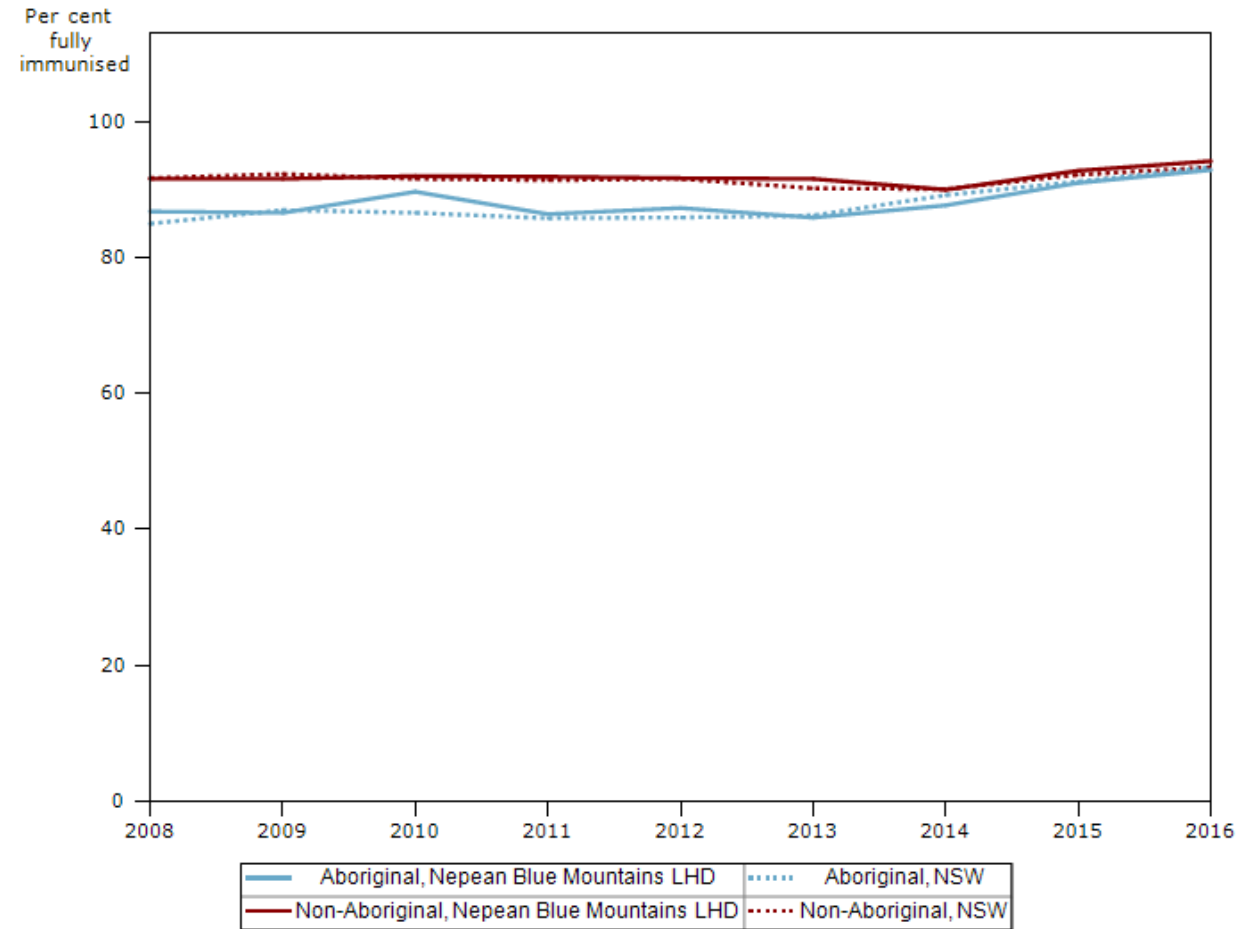
<http://www.healthstats.nsw.gov.au/>

Full immunisation by Aboriginality, children aged 5 years, NSW 2008 to 2016



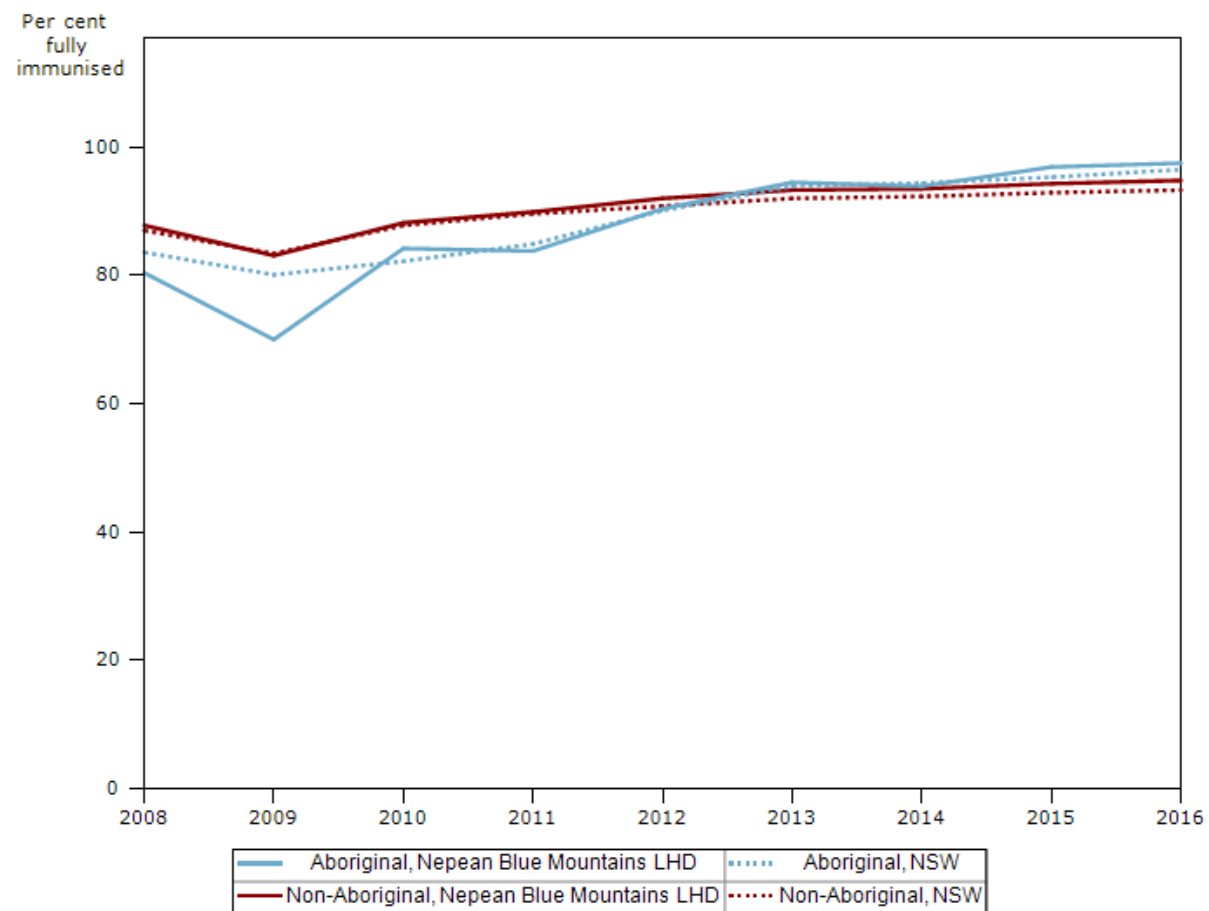
<http://www.healthstats.nsw.gov.au/>

Full immunisation by Aboriginality, children aged 1 year, Nepean Blue Mountains LHD, NSW 2008 to 2016



<http://www.healthstats.nsw.gov.au/>

Full immunisation by Aboriginality, children aged 5 years, Nepean Blue Mountains LHD, NSW 2008 to 2016



<http://www.healthstats.nsw.gov.au/>

Aboriginal immunisation liaison officer project

- ↑ immunisation rates in Aboriginal & Torres Strait Islander children in NBMLHD
- Initially 3-year project – now recurrently funded by Ministry of Health
- Strengthened ties with local community
- Liaison with Building Healthy Foundations, and ALOs at Nepean and Hawkesbury Hospitals
- NAIDOC events

ADOLESCENTS

TOGETHER
ACHIEVING
BETTER HEALTH



Health
Nepean Blue Mountains
Local Health District

School immunisation program completion rates for NBMLHD - 2016

| | |
|----------------------|-----|
| HPV | |
| Dose 1 | 81% |
| Dose 2 | 79% |
| Dose 3 | 76% |
| | |
| dTpa | 82% |
| Varicella | 69% |
| Men ACWY (2017 data) | 71% |

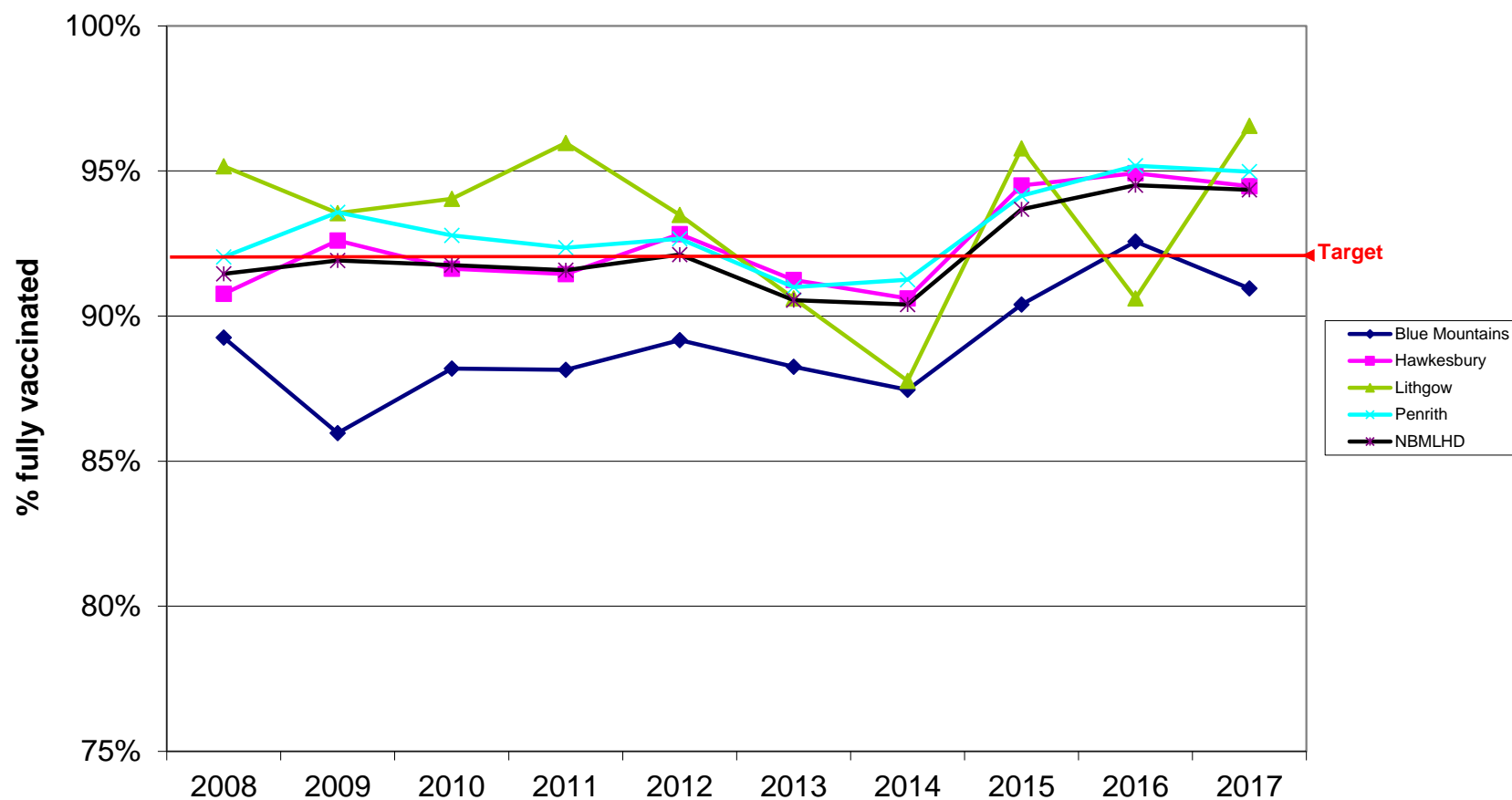
CHILDHOOD IMMUNISATION

TOGETHER
ACHIEVING
BETTER HEALTH

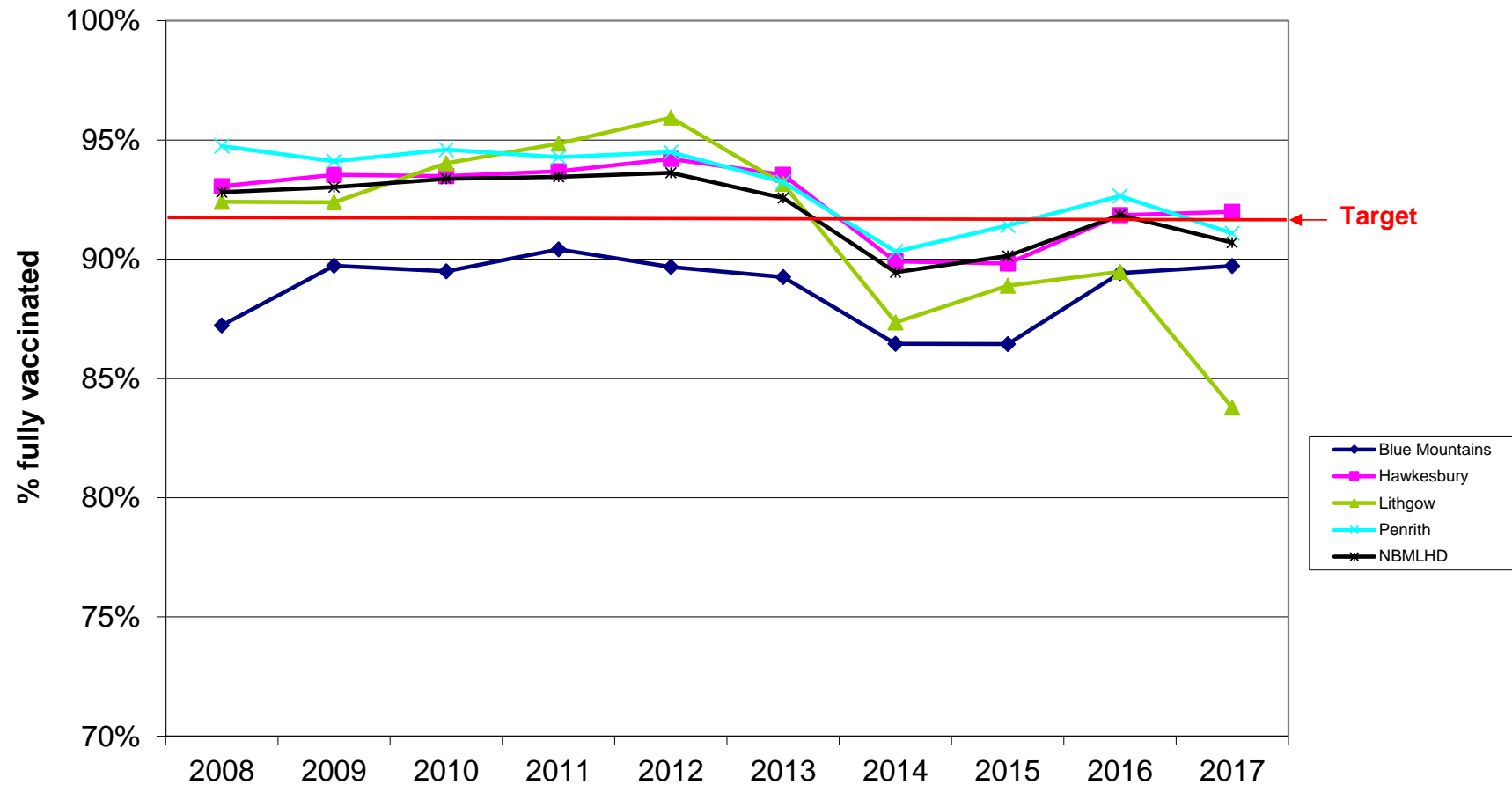


Health
Nepean Blue Mountains
Local Health District

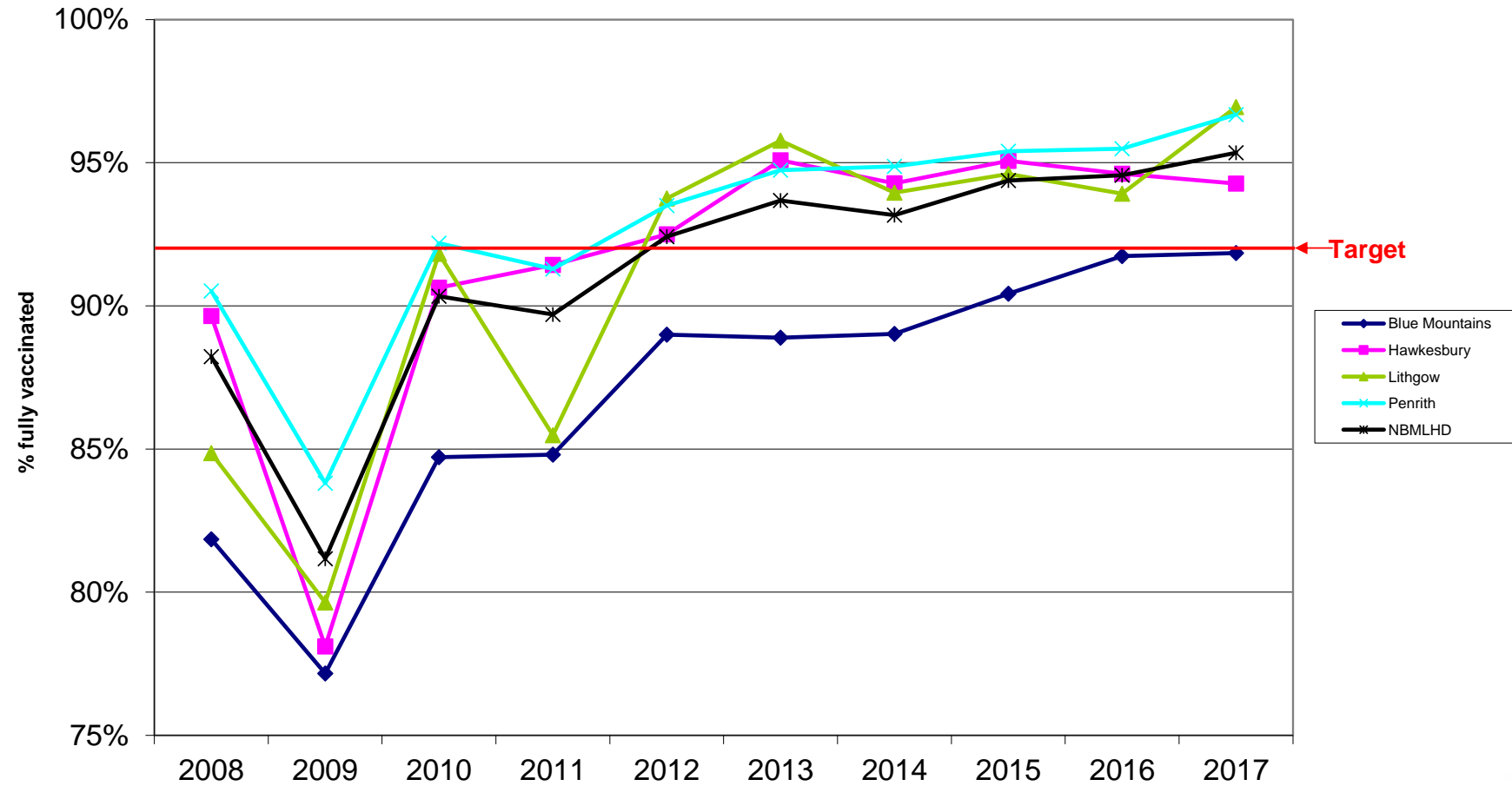
Vaccination Coverage Rates, NBM LHD, Children at 1 year, 2008 - Jun 2017



Vaccination coverage rates, NBM LHD, Children at 2 years, 2008 - Jun 2017



Vaccination coverage rates, NBM LHD, Children at 5 years, 2008 - Jun 2017



Neonatal Hepatitis B

For 2016 in NBMLHD:

- 98% of pregnant women were screened for Hep B
- 100% of infants born to HBV+ mothers received HBIG within 12 hrs
- 6% of all infants missed birth dose of Hep B vaccine

OLDER PEOPLE

TOGETHER
ACHIEVING
BETTER HEALTH



Health
Nepean Blue Mountains
Local Health District

Adult vaccination schedule

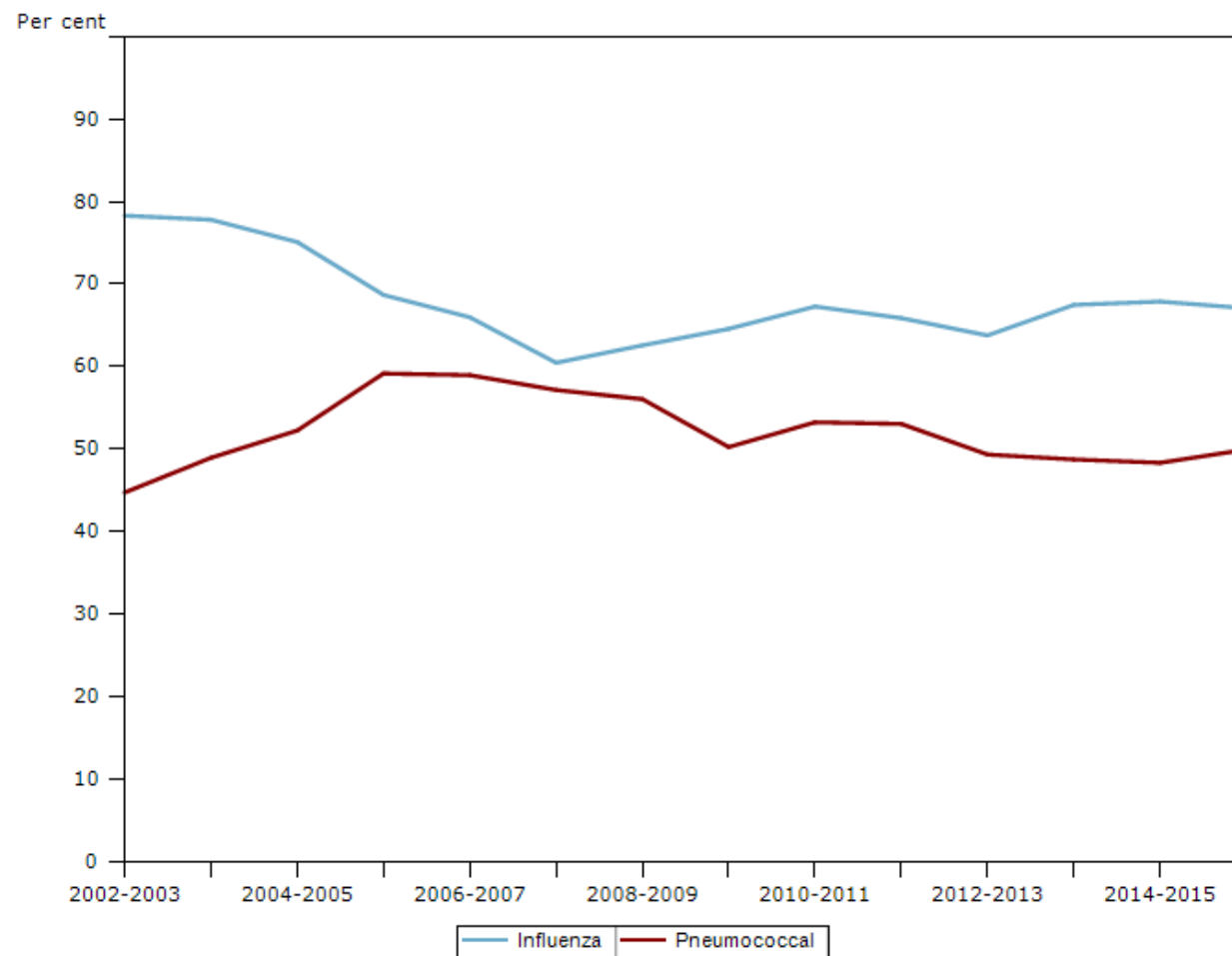
Pneumovax®

- Adults 65 years & over without medical risk factors: single dose at 65 yrs
- Adults 65 years & over with medical risk factors: **two doses 5 years apart**
- Aboriginal adults 50 years & over: **two doses 5 years apart**

Influenza

- all people aged 65 years and over
- all Aboriginal and Torres Strait Islander people aged 15 years and over
- pregnant women
- people with medical conditions predisposing to severe influenza, namely:
 - Cardiac disease
 - Chronic respiratory conditions
 - Other chronic illnesses
 - Chronic neurological conditions that impact on respiratory function
 - Impaired immunity, including HIV, malignancy and chronic steroid

Influenza and pneumococcal disease immunisation, persons aged 65 years and over*, Nepean Blue Mountains LHD, NSW 2002-2003 to 2015-2016



<http://www.healthstats.nsw.gov.au/>

Thank you

Questions?